

# RaceGrade

<b>Document Number</b>		RG_SPEC-0096	
<b>Title</b>		LMP2 Scrutineering Loom	
<b>Revision</b>	<b>Date</b>	<b>Prepared By</b>	<b>Change History</b>
1.0	12/6/2019	HW	Initial Release

**Part # RG.DV.PV0193**

## Description:

This is the complete Leader Light and Driver ID kit is required for the IMSA LMP2 Series. It includes a Driver Id Module, two leader light panels and complete interconnect harnesses. The Leader Lights displays information as specified by the IMSA WeatherTech series. This includes car position, car number, pit stop timer, and others.

The Driver ID module receives the driver resistor value and transmits it via CAN to the X2 transponder for IMSA timing and scoring system. Harnesses provide the interconnect between Driver ID plug, Leader panels, X2 transponder, Delphi yellow Light system, Pro/AM light system and power.

**\*\*Note:** This harness must be purchased through MoTeC USA and **CANNOT** be changed or repaired by teams\*\*

## Kit Contents:

Below is the list of electronics to be purchased from MoTeC USA.

<b>Model</b>	<b>Description</b>
<b>PV0091</b>	Leader Light Panel (2 required per vehicle)
<b>PV0176</b>	Driver ID Module
<b>3800-CP114A</b>	Cockpit Harness
<b>3800-BH113A</b>	Bulkhead Harness
<b>3800-LS111A</b>	Left Sidepod Harness
<b>3800-RS112A</b>	Right Sidepod Harness

**Leader Panel Specifications:**

Supply Voltage: 6.0v – 18.0v

Current: 1.75 A @ 12v full brightness Single color  
4.0 A @ 12v full brightness white color

Operating Temp: -40°C to 85° C

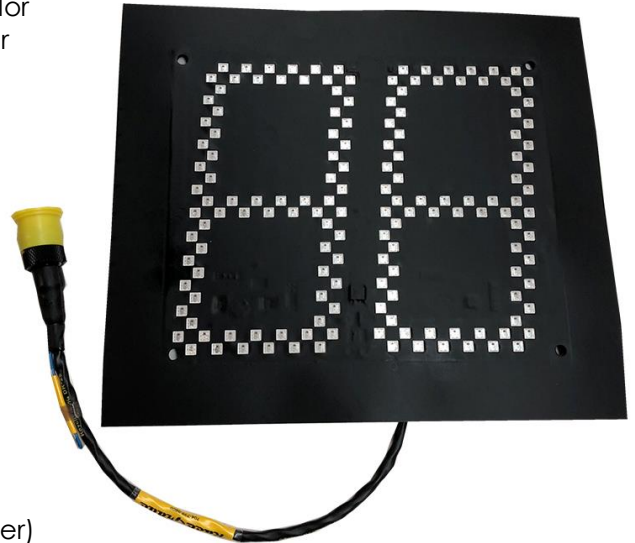
Size: 9.25" x 8.00 "x ¼"  
235.0 mm x 203.20 mm x 4.25 mm

Weight: 100 grams

Mounting: 1" perimeter Adhesive backing  
3/16" rivets or similar

Harness: 300 mm wire lead

CAN Communications: Design Standard: ISO 11898-2  
Message Format: 2.0A (11-bit identifier)  
Baud Rate: 1 Mbit/sec  
CAN Termination Resistor: No  
CAN Outputs: 1



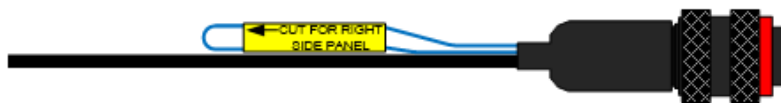
**Connection:** AS608-35PN

Mating Connector: AS108-35SN

1	12V+	Red
2	GND	Black
3	CAN_LO	Green
4	CAN_HI	Yellow
5	N/C	
6	N/C	

**Note:**

It is critical when utilizing two panels on one car that the loop labelled 'cut for right side panel' is cut to prevent diagnostic CAN ID conflicts. If cut by accident, please contact a MoTeC Representative for further instructions.



**Figure 1:** Example of Panel vehicle side designation Loop shown un-cut for left side use

**Driver ID Module Specifications:**

Size:	9.0v – 18.0v
Current:	100 mA max draw
LED output:	Flashes Driver ID Number (1-5) on power up Flashes Driver ID Number (1-5) on driver change
CAN communications:	Driver ID information sent to X2 transponder Diagnostics sent for internal use
Operating temp:	-40°C to 85° C
Size:	1.77" x 1.97 "x 1.81" 45.0 mm x 50.0 mm x 30.0 mm
Weight:	90 grams
Mounting:	Double sided Velcro or similar
Harness:	125 mm wire lead

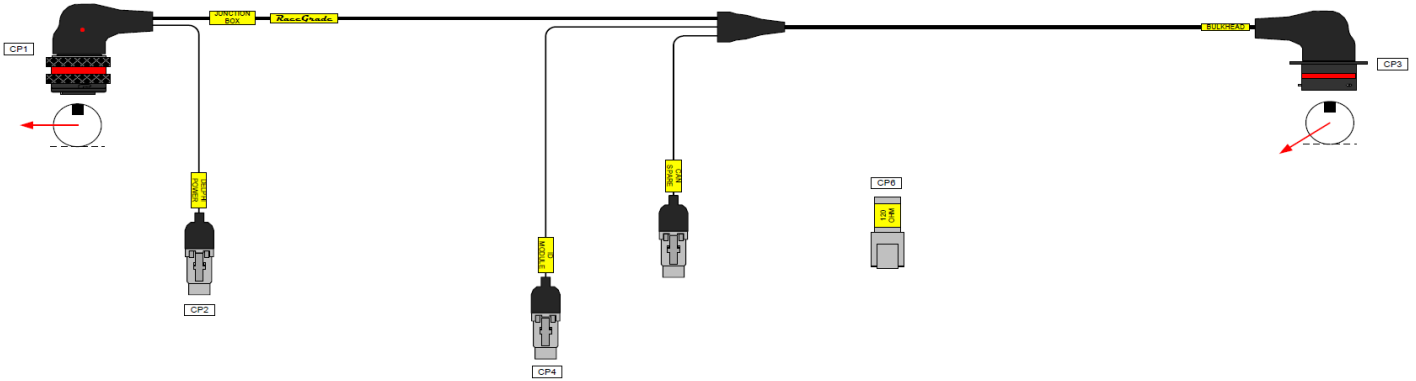


**Figure 2:** Driver ID Module

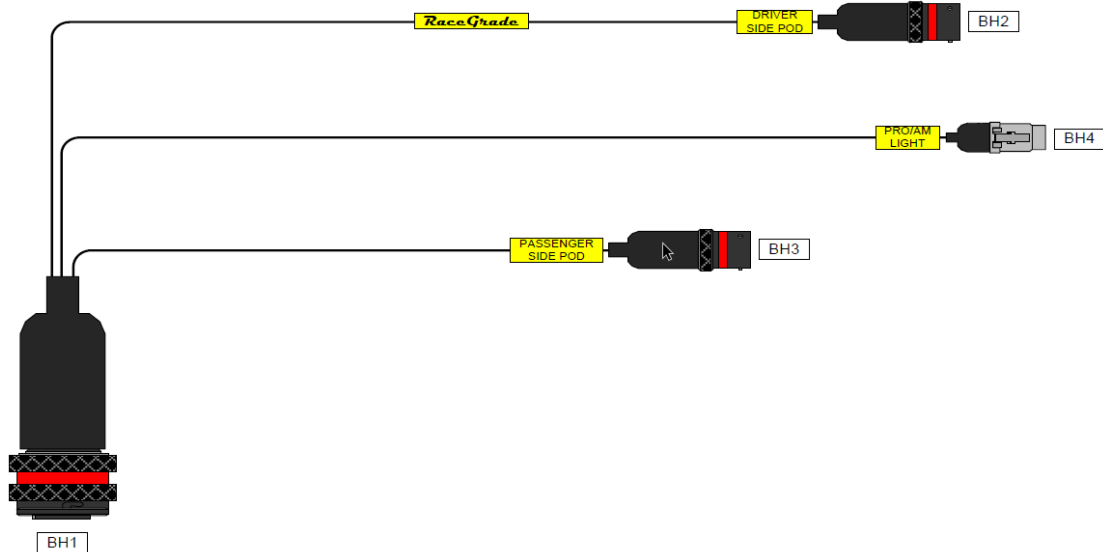
**Harness Specifications:**

**3800-CP114A:** Primary Cockpit Harness

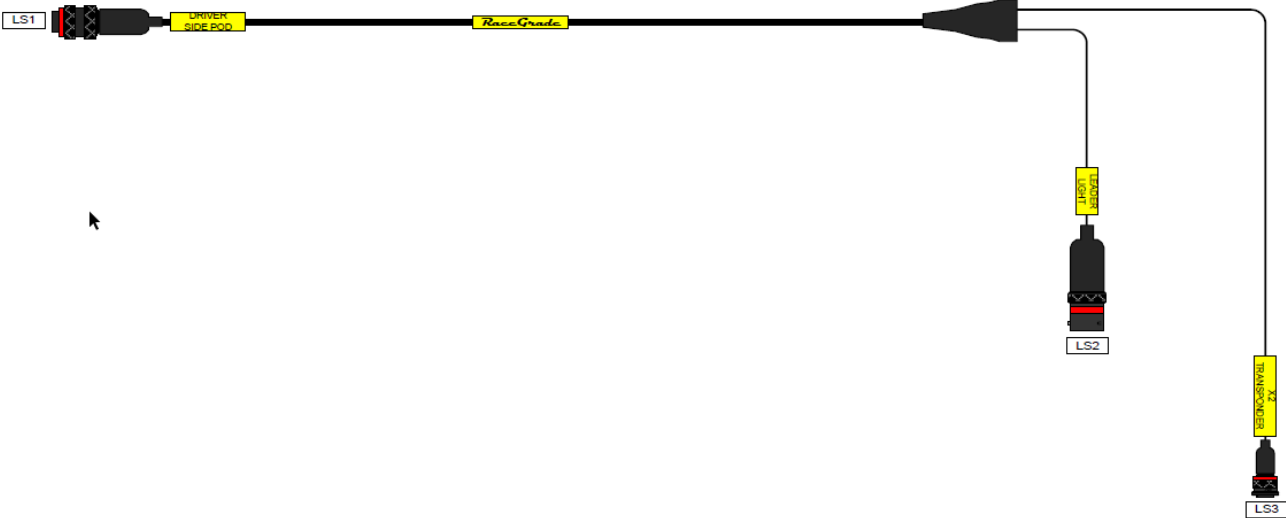
The primary harness connects the IPS power connection to the bulkhead connector, Driver ID Module, Delphi light system and Spare CAN.



**3800-BH113A:** Bulkhead harness to split the harness from left sidepod to right sidepod and break out the connection for the Pro/AM light.



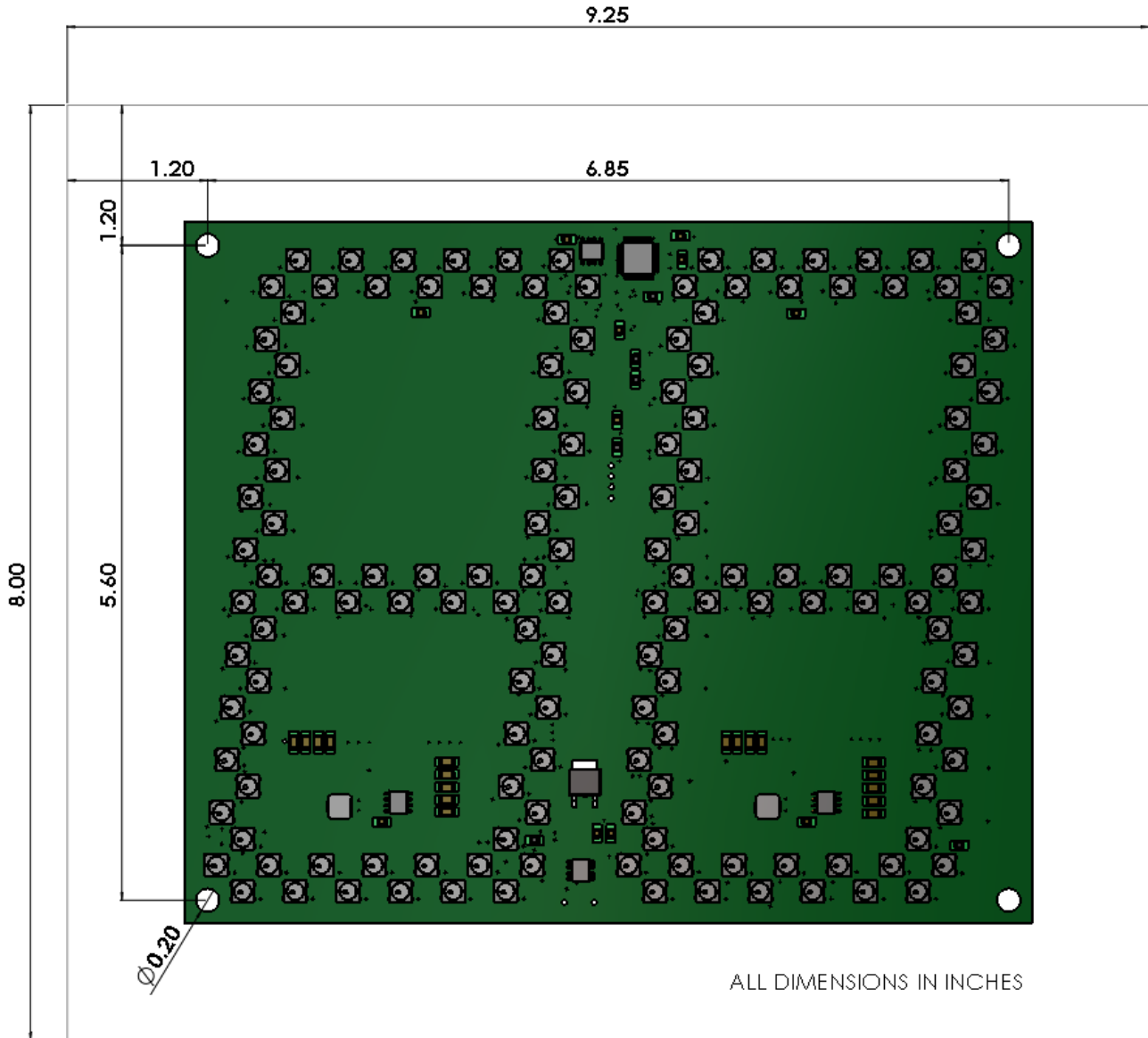
**3800-LS111A** Left Sidepod harness for Left side leader light and X2 transponder.



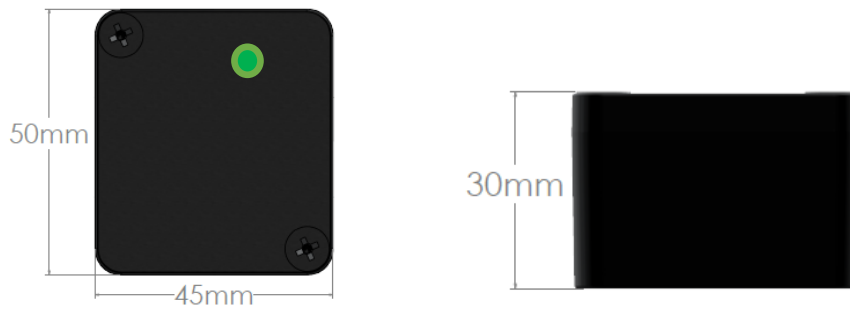
**3800-RS112A** Right Sidepod harness for right side Leader Light connection



**Dimensions:**



**Figure 3:** Dimensional drawing of panel



**Figure 4:** Dimensions of Driver ID Module