

Document Number		RG_SPEC-0082	
Title		1 Bar Manifold Absolute Pressure Sensor	
Revision	Date	Prepared By	Change History
1.0	8/15/2017	Nick Baggett	Initial Release

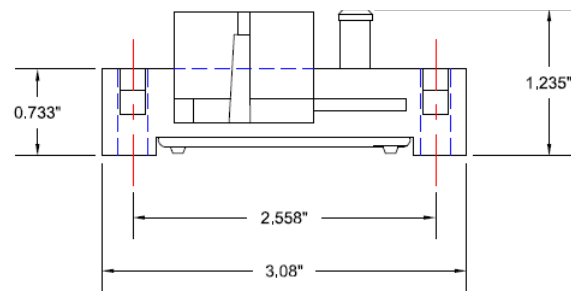
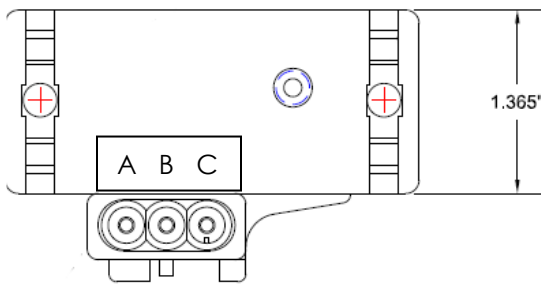
The M 16-7039.2 is suitable for measuring inlet manifold pressure from 10 kPa to 104 kPa, absolute.

Specifications

Calibration Information	
Voltage (V)	Pressure (kPa)
0.247	15
4.853	102

A 0 VOLT
B SIGNAL
C 5 VOLT

Mounting holes	0.25" Dia
Inlet Port	0.25" Dia
Barb	0.288" Dia



Installation Information

Mating connector: M 120-0403

Sensor should be mounted with vibration isolation and away from high turbulence & buffeting.

When mounted off engine as a MAP sensor, mount as follows:

