

Document Number		RG_SPEC-0081	
Title		3 Bar Manifold Absolute Pressure Sensor	
Revision	Date	Prepared By	Change History
1.0	8/14/2017	Nick Baggett	Initial Release

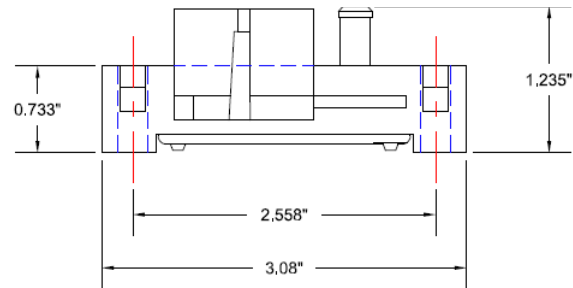
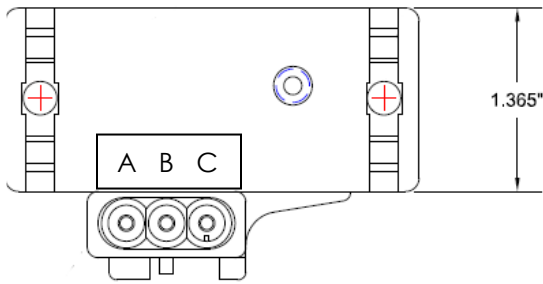
The M 16-0749.2 is suitable for measuring inlet manifold pressure from 10 kPa to 300 kPa, absolute.

Specifications

Calibration Information	
Voltage (V)	Pressure (kPa)
0.3	20
4.816	304

A 0 VOLT
B SIGNAL
C 5 VOLT

Mounting holes	0.25" Dia
Inlet Port	0.25" Dia
Barb	0.288" Dia



Installation Information

Mating connector: M 120-5796

Sensor should be mounted with vibration isolation and away from high turbulence & buffeting.

When mounted off engine as a MAP sensor, mount as follows:

