

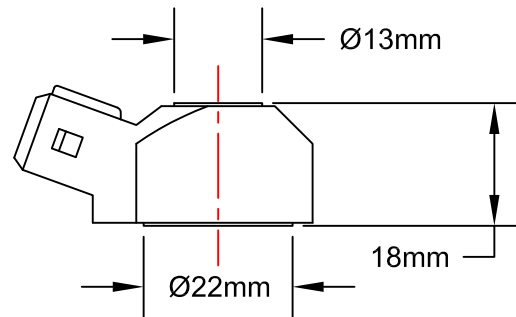
Motec

M 0261 045

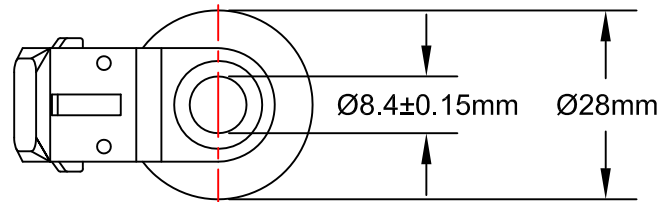
KNOCK SENSOR

NOTES

- SENSOR'S BRASS BASE SURFACE MUST REST COMPLETELY & DIRECTLY ON ENGINE BLOCK MATING SURFACE DURING OPERATION
- CONTACT SURFACE MUST BE CLEAN AND FLAT TO ENSURE FLUSH MOUNTING
- SENSOR CABLE MUST BE SECURELY MOUNTED AND ROUTED AWAY FROM HIGH NOISE CONDUCTORS

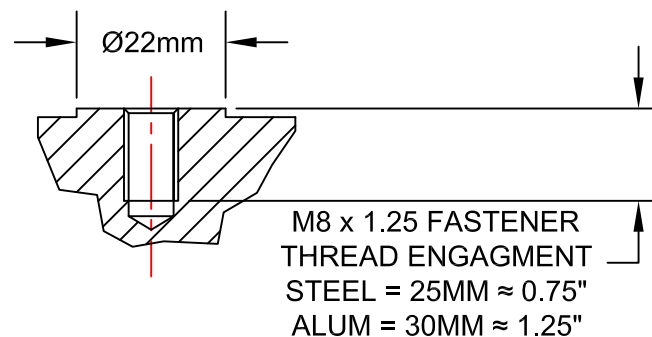


FREQ RANGE: 1-20 kHz
TEMP RANGE: -40 - 130°C



USE TERMINATION KIT
PN: M LK-2 KIT
TO MATE WITH SENSOR

PIN 1 = SIGNAL
PIN 2 = 0 VOLTS



MAX TORQUE OF
MOUNTING BOLT IS
20 N·m (15 FT·LB)